



SPIRAL TUBE GAUGE

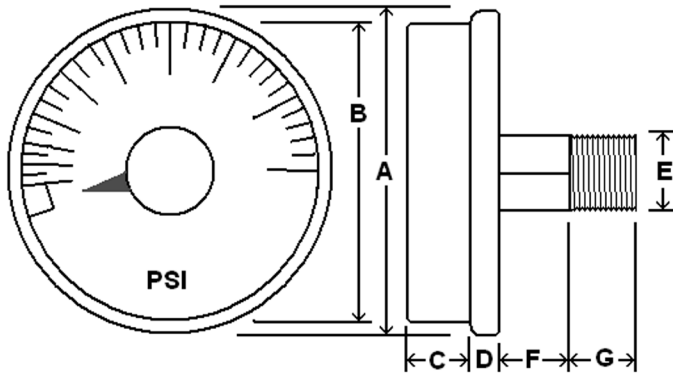
Direct drive gauge for applications requiring enhanced durability and repeatability
 Suitable for air, water, oil, gas or other media not corrosive to Copper alloy

SPECIFICATIONS

Dial	1 ¼" (36 mm), 1 ½" (42 mm)
Case	Stainless steel, dry non-fillable
Wetted Parts	Copper alloy
Ranges	0/160, 0/300, 0/500, 0/1000, 0/3000 psi
Lens	Plastic
Pointer	Aluminum
Connection	Center back mount 1/8" NPT
Scale	Standard: single scale psi
Accuracy	5% of span, ASME B40.1 Grade D
Ambient Temp	30° F to 160° F



Design meets or exceeds ASME B40.100 pressure gauge standard.



Dial	Unit	A	B	C	D	E	F	G
1 ¼"	In.	1.40"	1.20"	0.16"	0.25"	1/8"	0.28"	0.32"
	mm	36	31	4	7	NPT	7	8
1 ½"	In.	1.65"	1.46"	0.23"	0.23"	1/8"	0.23"	0.33"
	mm	42	37	6	6	NPT	6	8.5

Contact PIC Gauges for configurations and ordering information

AVAILABLE OPTIONS*

- Custom Dial
- Special Connection Size
- Other Ranges
- Use No Oil

*Lead times/minimums may apply

APPROXIMATE SHIPPING WEIGHTS/ BOX QUANTITIES

Dial Size	Est. Unit Wt.	Box Qty
1 ¼"	0.05 lbs (0.02 kg)	upon request
1 ½"	0.05 lbs (0.02 kg)	upon request